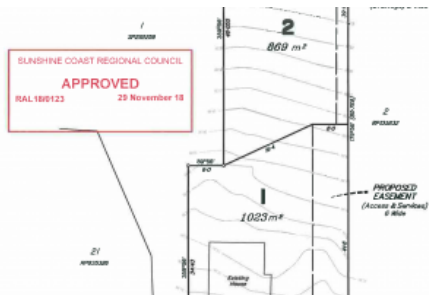


Sold



50 Cooloolabin Rd, Yandina



Indulge or Develop! - North Facing to Bushland, with DA Subdivision Approval

An exciting opportunity has presented itself. This Queensland Workers cottage built in the 1950's, set on 1892m2 land is ready to move into or renovate and restore to its former glory. North Facing with frontage to a Native Bushland Reserve, your view will never be built out.

There is a current DA approval to subdivide an additional lot which will allow the construction of a large duplex. Yes!, from 1 home to 3. Plans for the duplex are available on request.

The existing Workers cottage consists of 3 bedrooms, study, plus sunroom. it has High ceilings throughout the home. The air conditioned lounge is in the heart of the home leading into a spacious kitchen/dine with electric oven and cook top with ample amount of cupboards for storage, opening onto a north facing back verandah which has a lovely bush outlook. The laundry is located under the house with plenty of storage space and car accommodation.

The above information provided has been furnished to us by the vendor/s. We have not verified whether or not that information is accurate and do not have any belief in one way or the other in its accuracy. We do not accept any responsibility to any person for its accuracy and do no more than pass it on. All interested parties should make and rely upon their own inquiries in order to determine whether or not this information is in fact accurate.

3 1 2 1,892 m2

Price SOLD for \$950,000

Property Type Residential

Property ID 1445

Land Area 1,892 m2

Agent Details

Kate Henderson-Burton - 0458 060 757

Office Details

Yandina Realty
2 Stevens St Yandina QLD 4561
Australia
07 5446 7699

YANDINA
Realty